

Contact Point

| | | |
|--|---|---|
| Yokohama City Resources and Waste Recycling Bureau | Disposal Site Management Division (General Waste Products) | TEL 045-671-2560 FAX 045-664-9490 6-50-10 Honcho, Naka-ku, Yokohama city 231-0005 |
| | Business Waste Countermeasures Division (Business Waste Products) | TEL 045-671-2547 FAX 045-663-0125 6-50-10 Honcho, Naka-ku, Yokohama city 231-0005 |
| Minami-Honmoku Waste Final Disposal Site Management Office | | TEL 045-625-9647 FAX 045-625-9648 4, Minami-Honmoku, Naka-ku, Yokohama city 231-0816 |

Location Details



Minami-Honmoku Block No.5 Waste Final Disposal Site

Yokohama City waste and recycling webpage
<https://www.city.yokohama.lg.jp/kurashi/sumai-kurashi/gomi-recycle/>



PR video for the disposal site



Published Jun. 2024 by the Disposal Site Management Division, Resources and Waste Recycling Bureau, Yokohama City

100% recyclable ♻️

This document can be recycled for reuse as printer paper.

Minami-Honmoku Block No.5 Waste Final Disposal Site

For the Sake of Future Generations

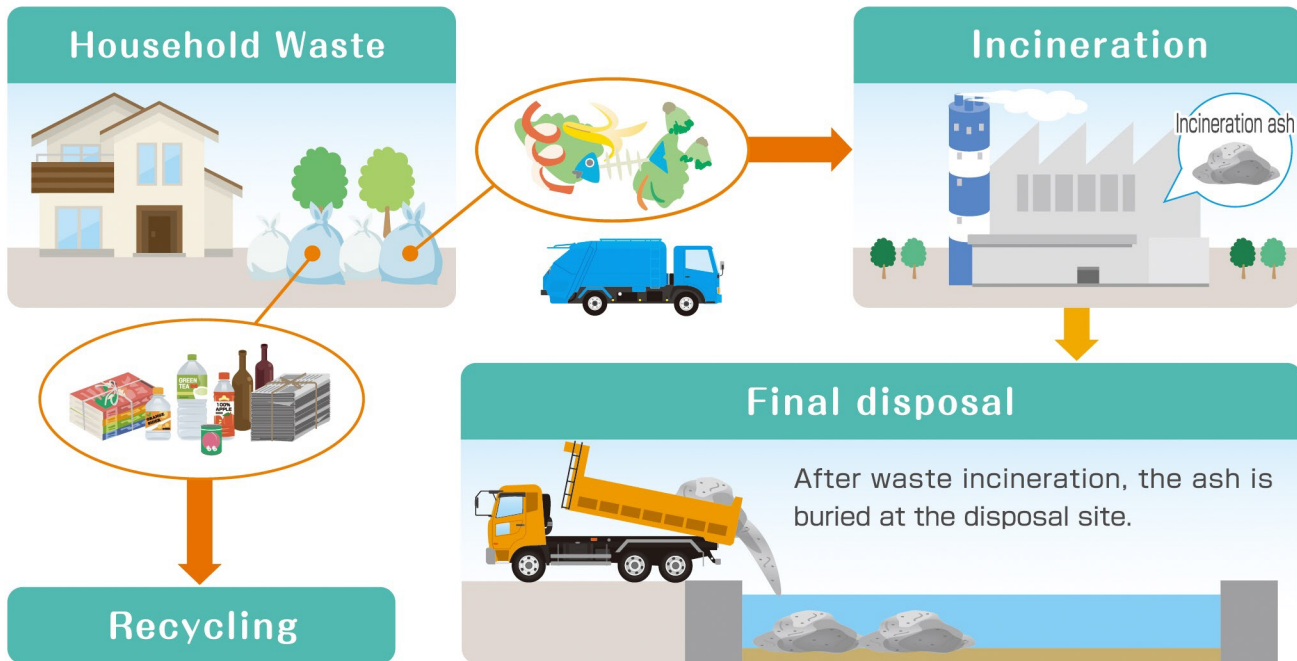


City of Yokohama

Overview of the Minami-Honmoku Block No. 5 Waste Final Disposal Site

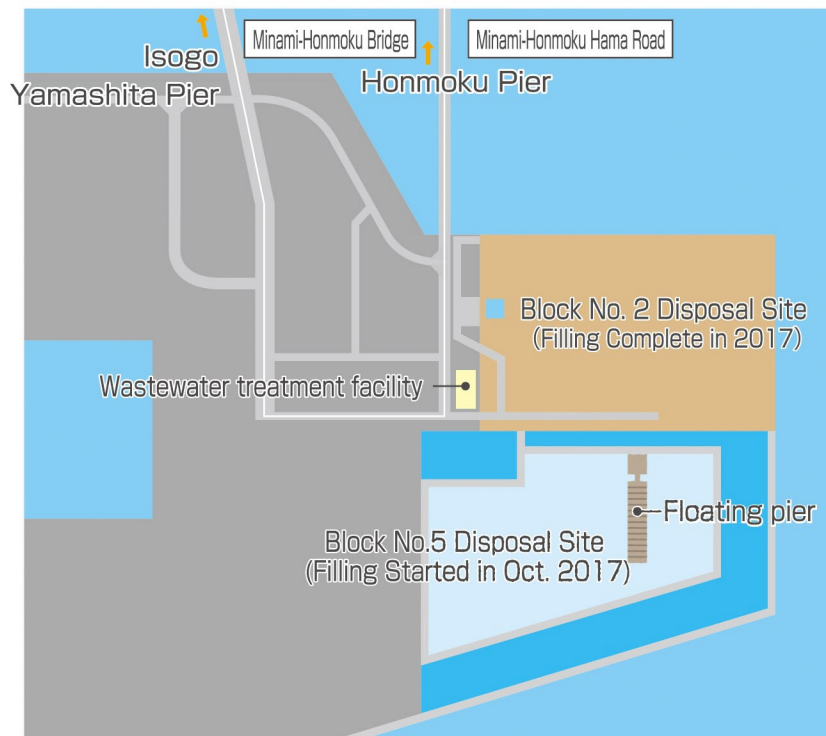
Final Waste Disposal Sites

Household waste is divided into burnable trash and trash that can be recycled. Burnable trash is taken via garbage trucks to incineration plants where it is burned and the resulting incineration ash sent to a final waste disposal site to be buried. The Minami-Honmoku Block No. 5 is Yokohama City's only general waste final disposal site, and thus serves as an important but limited-capacity asset for all of us.



● The final waste disposal site is partially used for the burying of industrial waste as well.

Overview Map

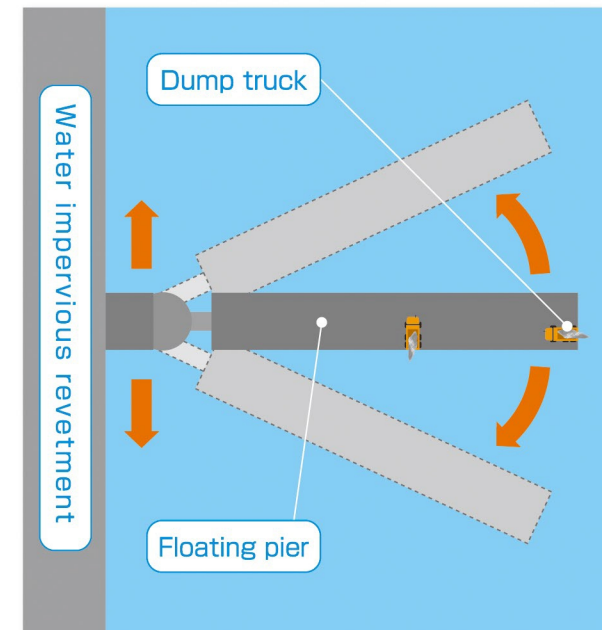


| | |
|-------------------------|---|
| Location Near | 4, Minami-Honmoku, Naka-ku, Yokohama city |
| Final disposal area | 16.4 ha |
| Final disposal capacity | 4,000,000m ³ |
| Water depth | Approx. 35m |
| Final disposal duration | Approx. 50 years from Oct. 2017 |

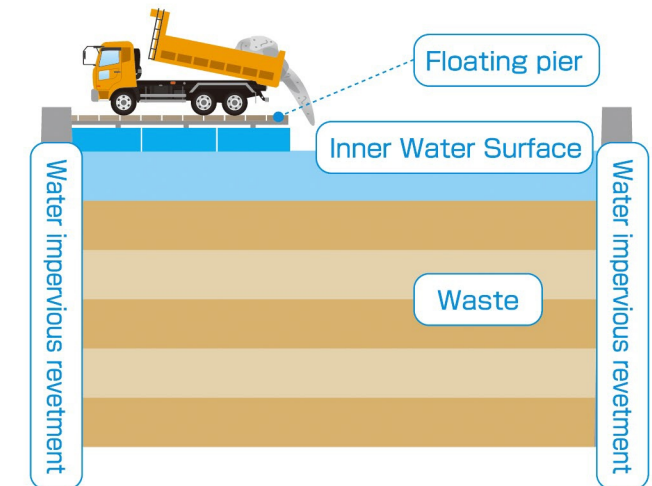
Waste Landfill Method

The Minami-Honmoku Block No. 5 Waste Final Disposal Site is a sea-surface disposal site with a water depth of 35 meters. Protective revetments are installed adjacent around the inner portion of the water-filled disposal site in order to protect the surrounding sea from contamination. A floating pier is used for dumping of waste, and regular repositioning of this pier enables even formation of the waste layer below, ultimately resulting in a stable and uniform land surface when filling is complete.

Overhead Diagram



Cross-Sectional Diagram



Repositioning of the pier enables the creation of wide-spread, thin layers of overlapping waste below.

Water Treatment

The interior water level in the sea-surface disposal site rises due to waste additions, rainfall and other such factors, which necessitates measures to prevent it from overflowing to the outside. Measures are taken to process and purify the water via a wastewater treatment facility, which prevents adverse effects on the surrounding environment. Furthermore, regular marine environment inspections are carried out around the disposal site and the results of said inspections made publicly available.

