

Discuss an evacuation plan with your family and friends.



Which evacuation place to meet?

Place to meet:

Regional Disaster Management Base:

In the event of an earthquake, it may be difficult to contact others by normal means. Make sure you know a place to meet with your family in advance.

How to contact?

Guardian Tel:

E-mail:

Friend Tel:

E-mail:

Friend Tel:

E-mail:

Consider using other methods of contact such as "Disaster Emergency Message Dial" etc.

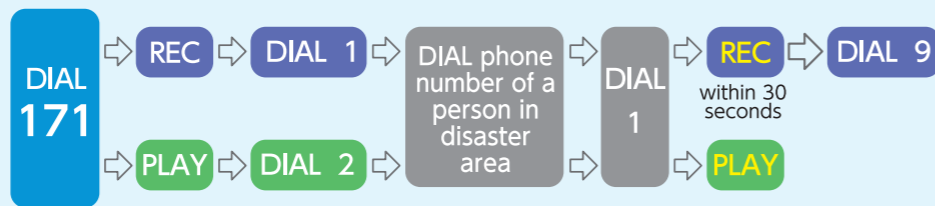
What to take with you in an evacuation?

Be sure to pack your medicines, spare eyeglasses, etc.

"Disaster Emergency Message Dial" to confirm family safety.

This is a voice messaging service, which will be provided when a disaster occurs. Due to communication traffic congestion, it becomes difficult to get through to the disaster-stricken area.

※"Disaster Message Board (Web 171) Service" has offered a response system to smartphones and message recording function since August 2012.



"Disaster Prevention QR Code" to obtain evacuation information of the City of Yokohama

Scan the QR code for registration of disaster prevention information.

Yokohama City Disaster Prevention Information E mail.



Yahoo! Disaster Prevention Breaking News



※This guideline was produced with the cooperation from Yokohama Municipal Minato Junior High School students.

General Affairs Division, Naka Ward Office, Yokohama City

Nihon Odori 35, Naka-ku, Yokohama 〒231-00021 TEL 045-224-8112 FAX 045-224-8109



この印刷物は、印刷用の紙へリサイクルできます。

Published in March 2019

# Naka Ward Regional Disaster Management Base

## ~Guideline for junior high school students~



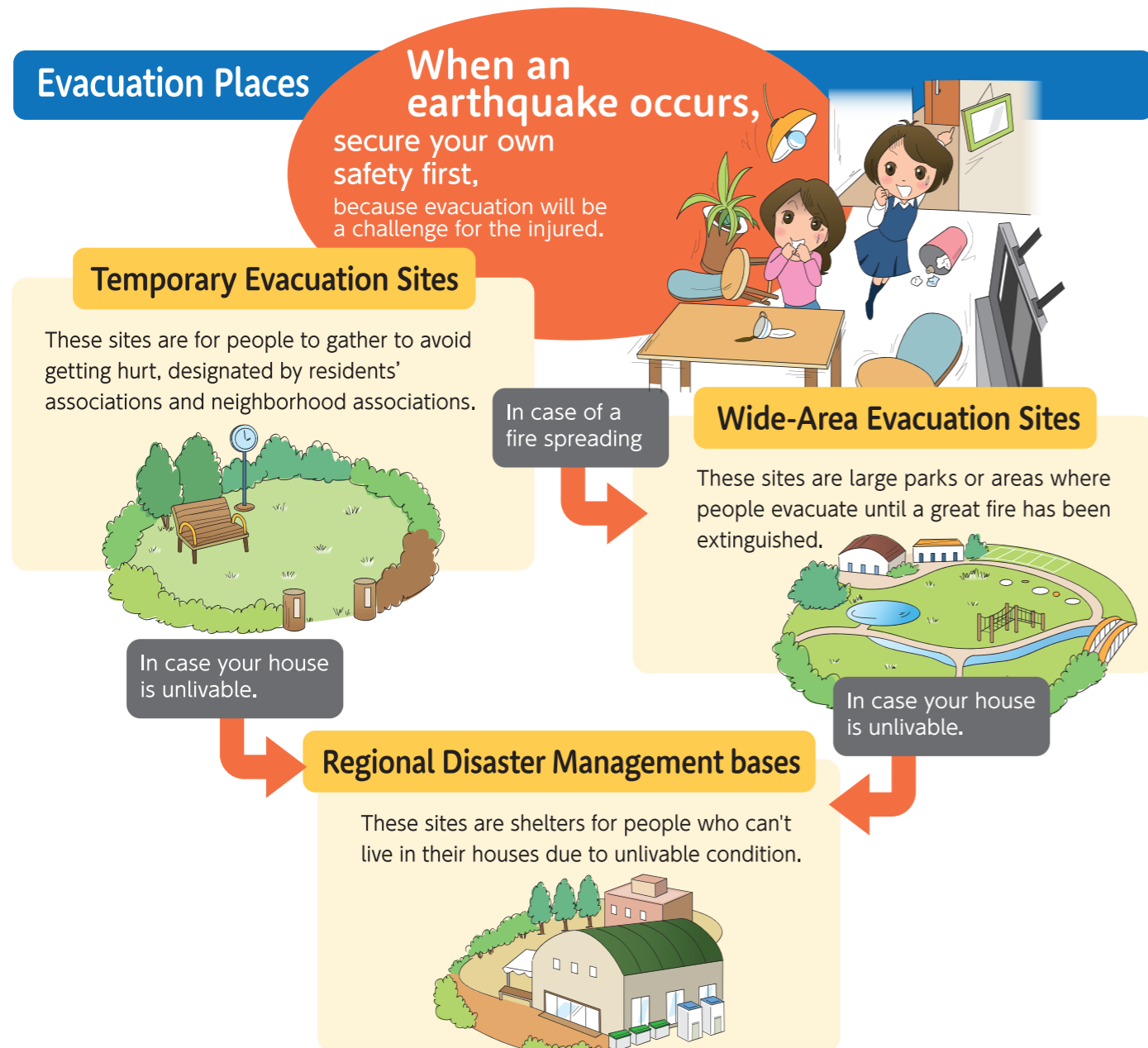
### When a major earthquake or disaster occurs,

- 1 Secure your own safety.
- 2 Evaluate how to evacuate to remain safe.
- 3 After you arrive at evacuation place, confirm the safety of your family and friends.
- 4 Stay at your Regional Disaster Management Base in case your house is unlivable.
- 5 Cooperate with one another at a Regional Disaster Management Base.



## Introduction

- Regular preparation (self-help) and local measures (mutual assistance) are necessary to minimize damage when a major earthquake occurs.
- City of Yokohama established “Yokohama Citizen Charter for Earthquake Disaster Prevention” (herein after referred to the charter) to spread the importance of “self-help and mutual assistance” for citizens to carry out.
- This guideline was made in order for junior high school students to be of service to themselves and others at Regional Disaster Management Bases when an earthquake occurs, with the expectation they can contribute to the community.



**StepUp**  
Basics of countermeasures for an earthquake in Naka Ward

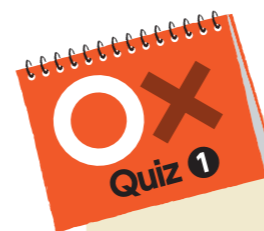
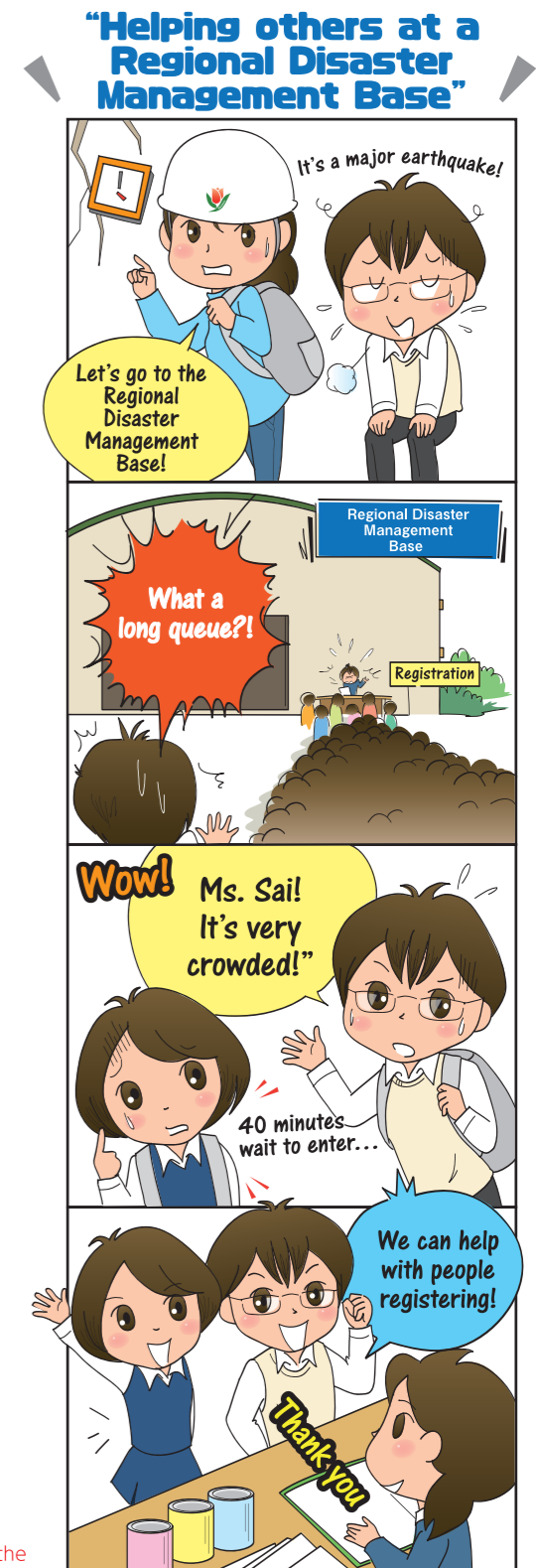
City of Yokohama established “Yokohama Disaster Management Plan” based on “Disaster Countermeasures Basic Act”. The Yokohama Disaster Management Plan consists of 3 parts, “Earthquake Disaster Countermeasures”, “Storm and Flood Countermeasures” and “City Disaster Countermeasures”. Earthquake procedures follow the “Earthquake Disaster Countermeasures”. “Naka Ward Disaster Management Plan, Earthquake Disaster Countermeasures” was established by the Naka Ward Office based on the city disaster management plan, earthquake disaster countermeasures to promote earthquake procedures.

## What is a Regional Disaster Management Base (designated shelter) ?

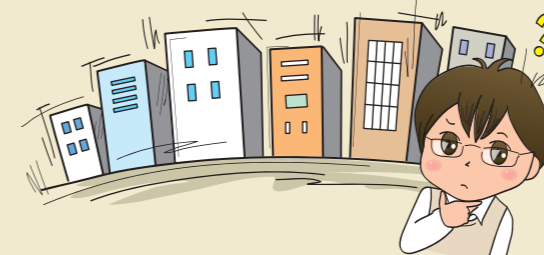
- Designated places by the City of Yokohama for the disaster victims or others to stay temporarily.
- Places to spend evacuation life, in case your house is unlivable due to being collapsed or burned down by a major earthquake or disaster.
- All evacuees themselves manage a shelter by helping each other, such as “registration”, “toilets set-up” or “food distribution” etc.
- Regional Disaster Management Bases are to be established by the local community in case that an earthquake bigger than seismic intensity 5 is observed somewhere in the City of Yokohama.



Space Partitioning Drill at a shelter



The earthquake seismic intensity scale has 10 levels from 0 to 7 to categorize the impact of the ground shaking. True or False?



See next page for the answer.

## At a Regional Disaster Management Base

- Food and water, necessary for evacuation life are stored here. Temporally toilets and living spaces are also available.
- At each Regional Disaster Management Base, a management committee is formed and meetings are conducted several times a year to enhance the regional disaster prevention's function.
- Among the evacuees, there may be handicaps, elderly people, pregnant women, small children etc., who have difficulties and need support in their daily life.
- It may not be spacious enough. Please cooperate with other evacuees during evacuation life.



Toilet assembly drill



Cooking drill

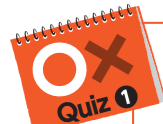


Food distribution drill



Water distribution drill

### “Assistance with carrying goods and set-up”



Answer: True



Seismic intensity scale has 10 levels going from 0 to 7. Levels 5 and 6 are sub-divided into lower and upper. The maximum earthquake tremor intensity of 7 has been assumed in some areas of Naka ward.

## Things you can do to help

Being junior high students, you have the physical strength and understanding equivalent to adults.

During daytime, people in their 20s to 50s who have the physical strength are seldom seen in neighborhoods.

In case of setting-up a shelter, local residents expect your physical strength and understanding.

At a shelter, evacuees themselves must do necessary things for their evacuation life such as setting-up toilets, carrying heavy items like desks, chairs, and relief goods etc.

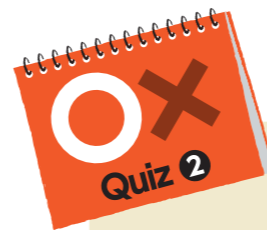
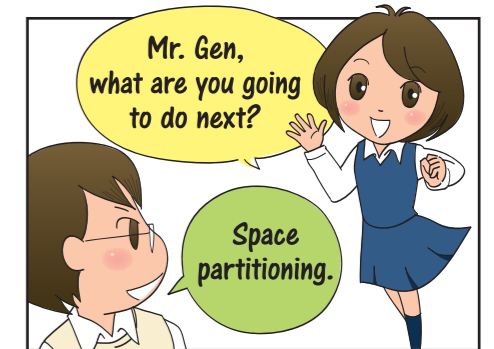
And there may be babies, small children and people requiring support among the evacuees. Then you shall think of what you are able to do and move to act under the circumstances.

**Try to support others within a reasonable range.**

**Reference** Necessary work at a shelter (partial)  
 Carrying desks for reception./ Carrying toilet materials and setting-up./ Space partitioning./ Assembling carbon-box beds./ Taking care of small children./ Cleaning./ Preparation and distribution of meals./ Transport of relief goods/ Conversation with evacuees.

Think and write down the things you can do to help.

### “What are the necessary things to do?”

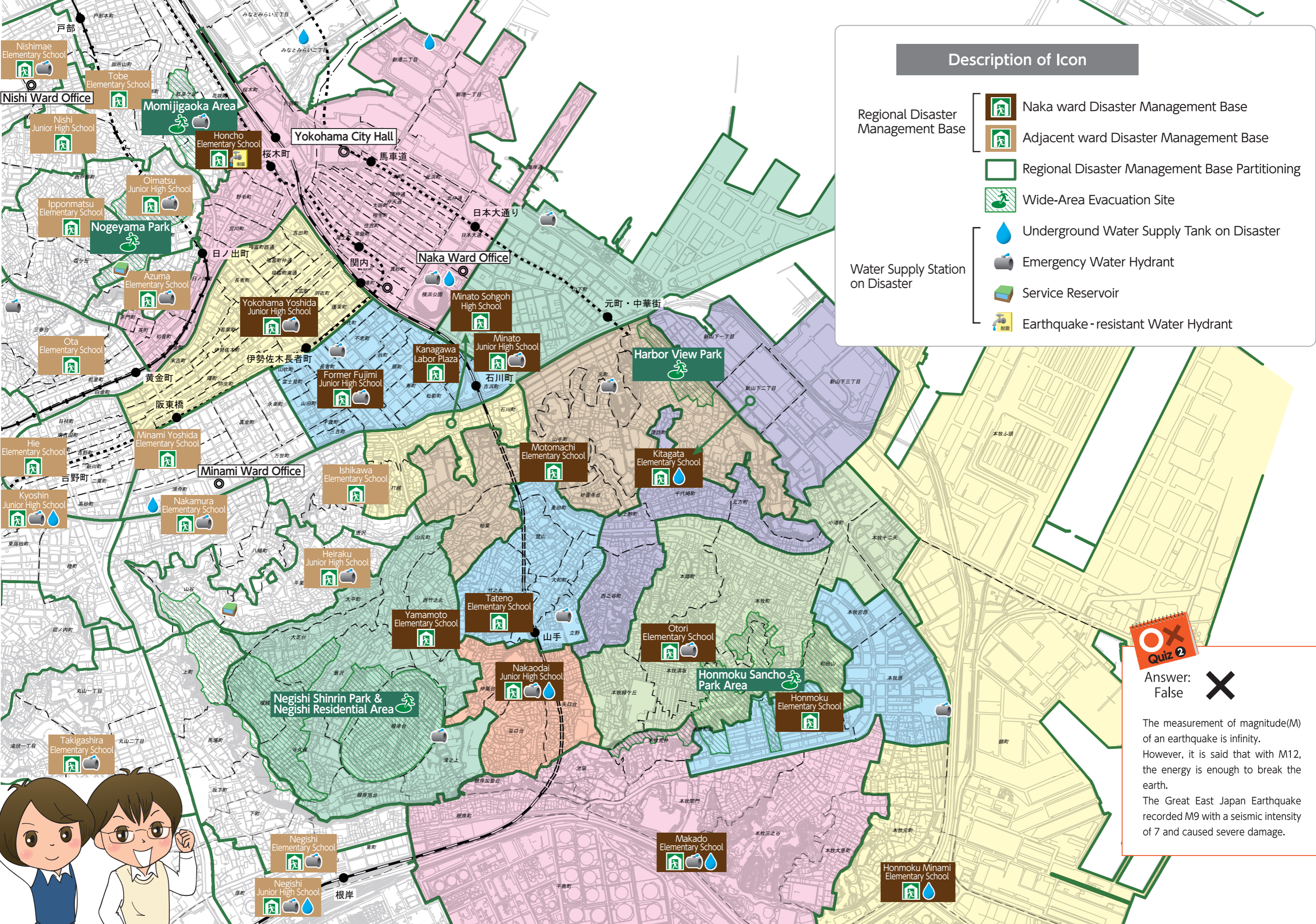


Magnitude (M)10 is the maximum number which indicates a scale of the earthquake.



See next page for the answer.

# Shelter Map



### Description of Icon

- |                                   |  |  |
|-----------------------------------|--|--|
| Regional Disaster Management Base |  | Naka ward Disaster Management Base             |
|                                   |  | Adjacent ward Disaster Management Base         |
|                                   |  | Regional Disaster Management Base Partitioning |
| Water Supply Station on Disaster  |  | Wide-Area Evacuation Site                      |
|                                   |  | Underground Water Supply Tank on Disaster      |
|                                   |  | Emergency Water Hydrant                        |
|                                   |  | Service Reservoir                              |
|                                   |  | Earthquake-resistant Water Hydrant             |

Answer: ✗  
False

The measurement of magnitude(M) of an earthquake is infinity. However, it is said that with M12, the energy is enough to break the earth. The Great East Japan Earthquake recorded M9 with a seismic intensity of 7 and caused severe damage.

